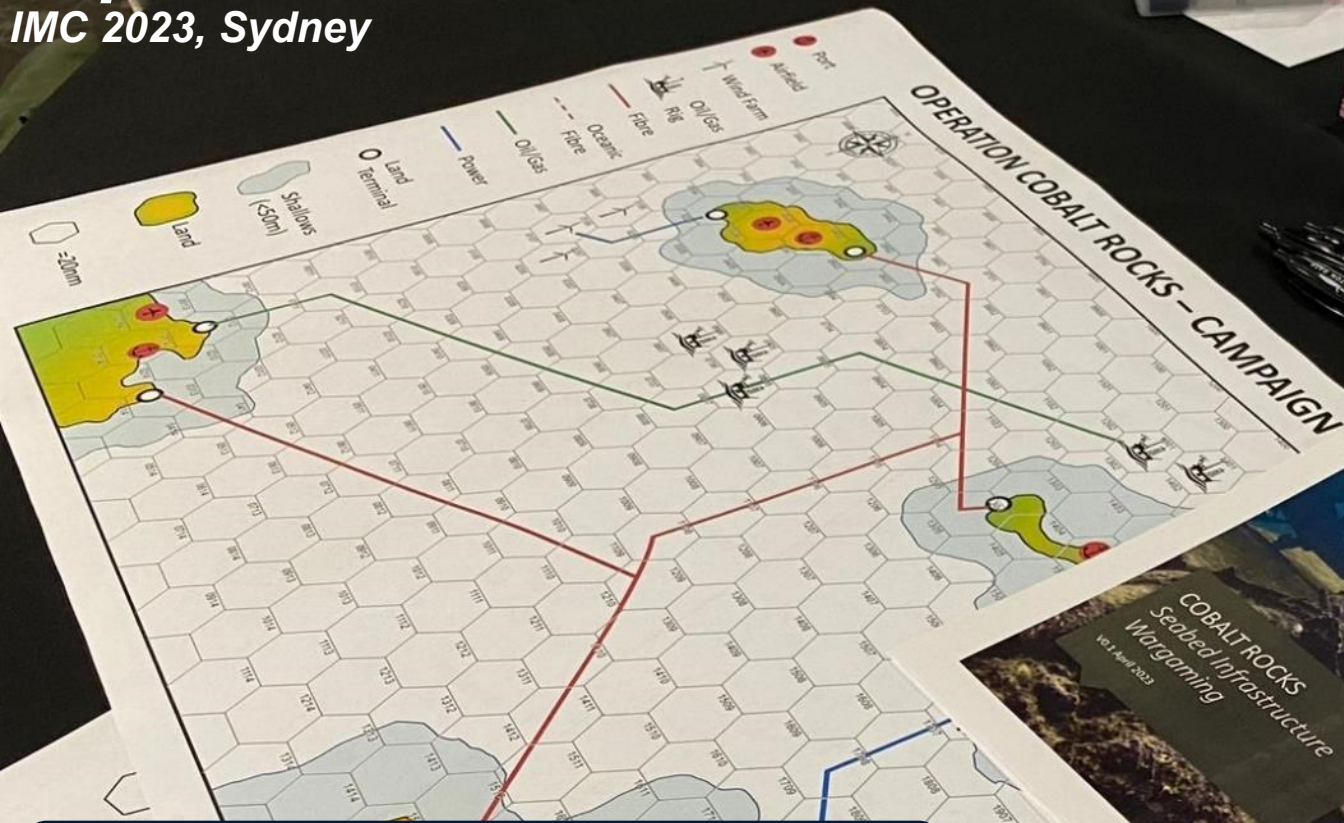




# Wargaming as a Naval Concept Exploration Tool

IMC 2023, Sydney



David Manley, CEng, FRINA, RCNC  
Professor of Naval Architecture, UCL

# Agenda

- Introduction
- What is Wargaming?
- Wargaming at UCL
- Why do we use it?
  - Strategic, operational, tactical
  - Other users
- The NATO NSSE Project
  - ASW Barrier operations
  - Game execution
  - Learning experiences
- Conclusion



# Who am I?

- Naval architect, Constructor Captain, RCNC
- Worked in the MOD for 30+ years
- Project naval architect for T22, T23 FFG and Astute SSN
- Currently the MOD Professor of Naval Architecture at UCL
  
- Specialist in warship survivability and weapon effects since 2000
- Secondment to Dstl, survivability R&D
- Lead the RN Survivability Strategy
- Technical adviser to all current RN and RFA ship and submarine projects, and to weapon projects on lethality
- Lead UK investigator in the ROKS Cheonan and HSV SWIFT inquiries
- Regular advisor to MOD agencies on emerging incidents, threats etc.



# What is Wargaming?

- the action of playing a war game as a leisure activity or exercise in personal development.
- the action of engaging in a campaign or course of action using the strategies of a military exercise.
- Played using miniatures, counters, or in an abstract form (especially matrix games)
- Played using a defined set of rules which reflect the perceived or actual realities of technology, capability, command and control etc.



# Historical Use of Serious Games in Naval Applications



US Naval War College



Western Approaches Tactical Unit (WATU)

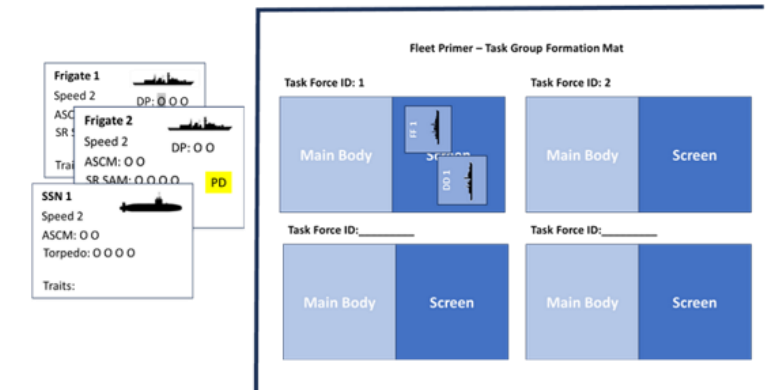
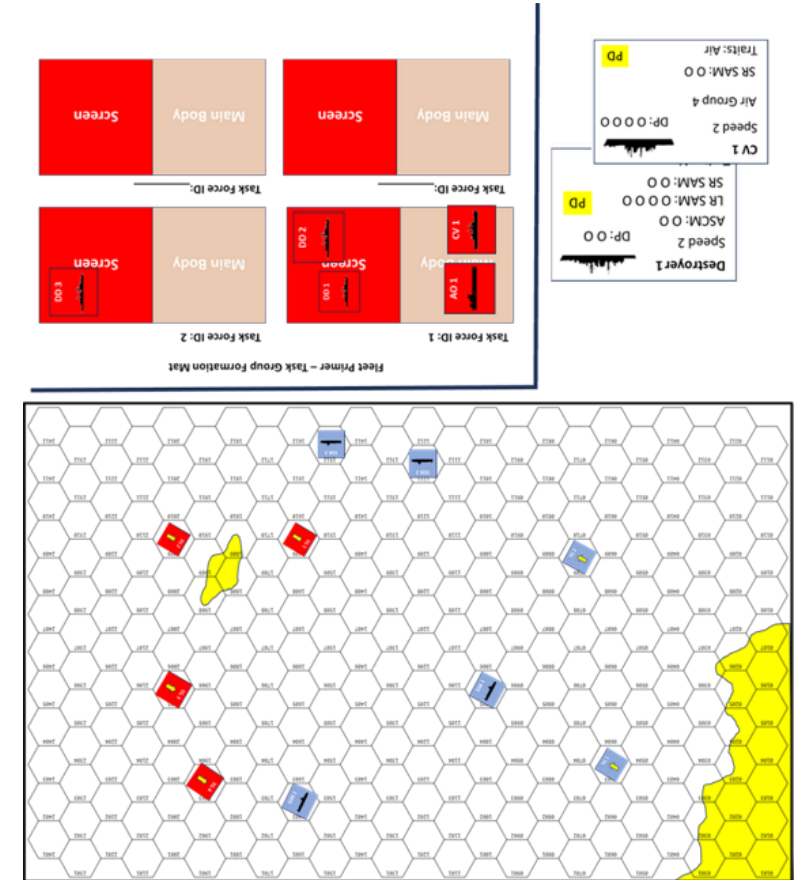
# Wargaming at UCL

- To train and raise student awareness in maritime and joint operations, capability aspects of warship design
- To rapidly assess design options at platform and force level
  - “desk level” operational analysis
- Examples:
  - Understanding how maritime, land and air forces can work together in a littoral operation.
  - Assessing the benefit of enhanced aviation assets in OPV design
  - Demonstrate the benefits of platform and UXV survivability on Mission Success
  - Determining the effectiveness of an anti air warfare system in a particular environment
  - Understand the role and capability required in a Seabed Operations Vessel



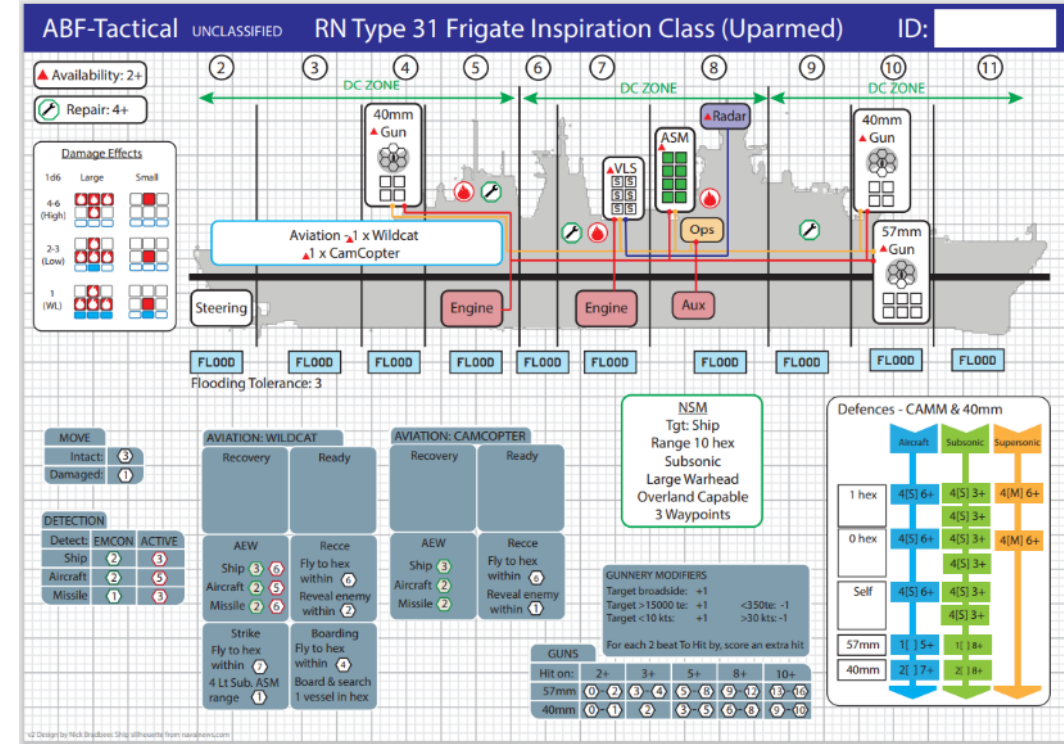
# “Fleet Command”

- Introduce students and others to the wider conduct of naval operations at the task group level
- Demonstrate the role of different ship types, how they come together and work together in squadrons, Task Groups and fleets
- Demonstrate how naval forces interact with land and air forces.
- Highlight the impact of different capability choices, such as enhanced resilience to weapon damage, signature control, long range and high speed weapons, etc.
- Developing use by the UK Maritime Warfare Centre



# “A Balanced Fleet”

- Our primary game for surface ship design support
- Developed over 10+ years
- F2F or double blind
- Allows detailed representation of student designs (and real world ships)
- Missile engagement model allows assessment of self defence capabilities
- System layout and other design aspects allow assessment of ship survivability
- Used throughout the SDX

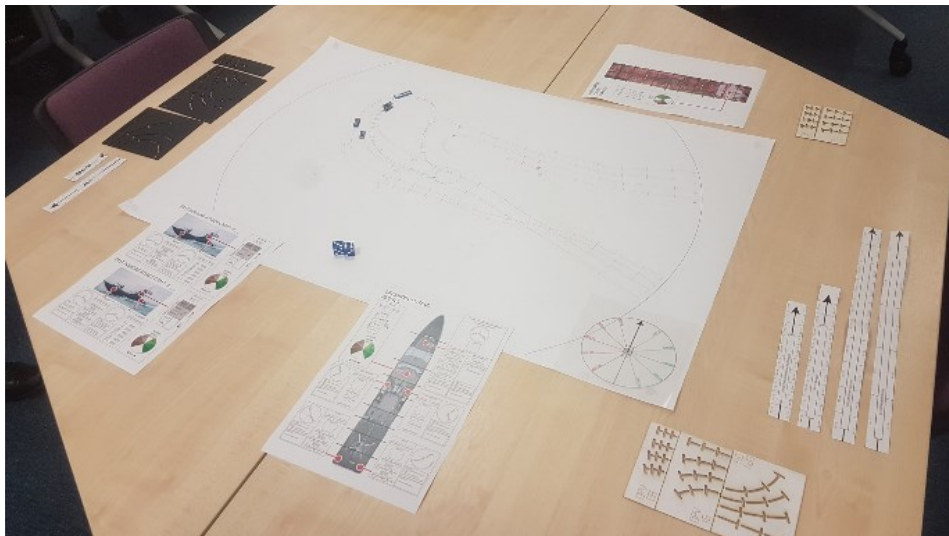




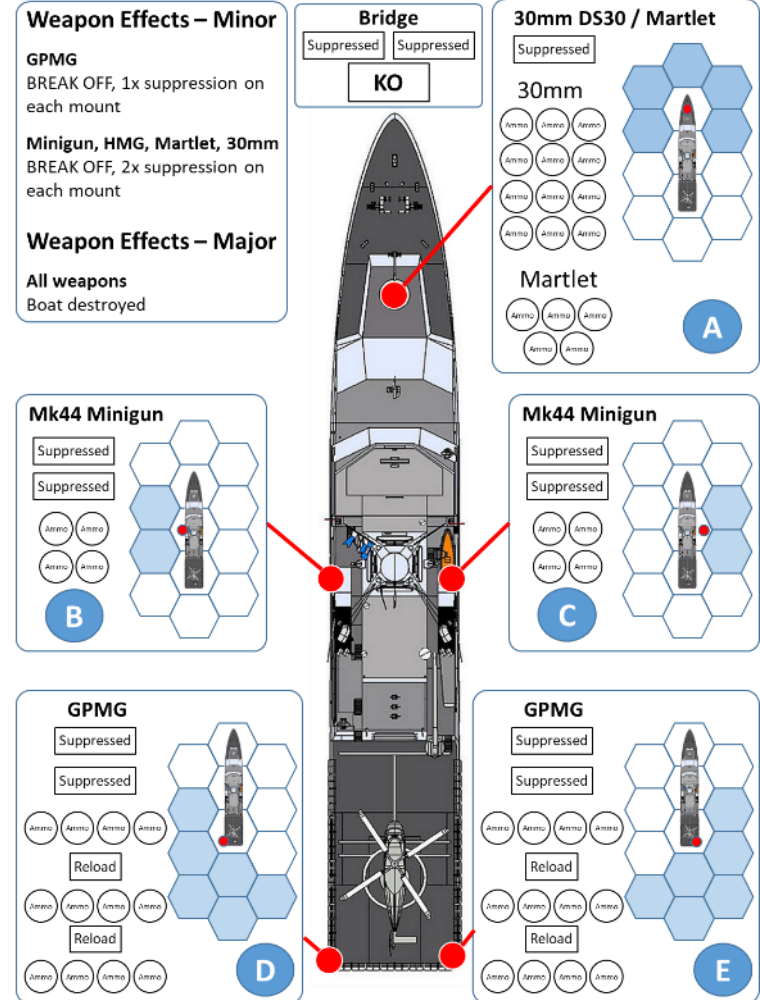
# Specialist Topics 1 - Low Level Tactical

## “Swarming Boats”

- OPV vs FIAC swarm
- Focus on small arms vs small craft, manoeuvring, firing arcs
- “Free movement” and a modified version for hex-based games (“CQB”)



## Offshore Patrol Vessel



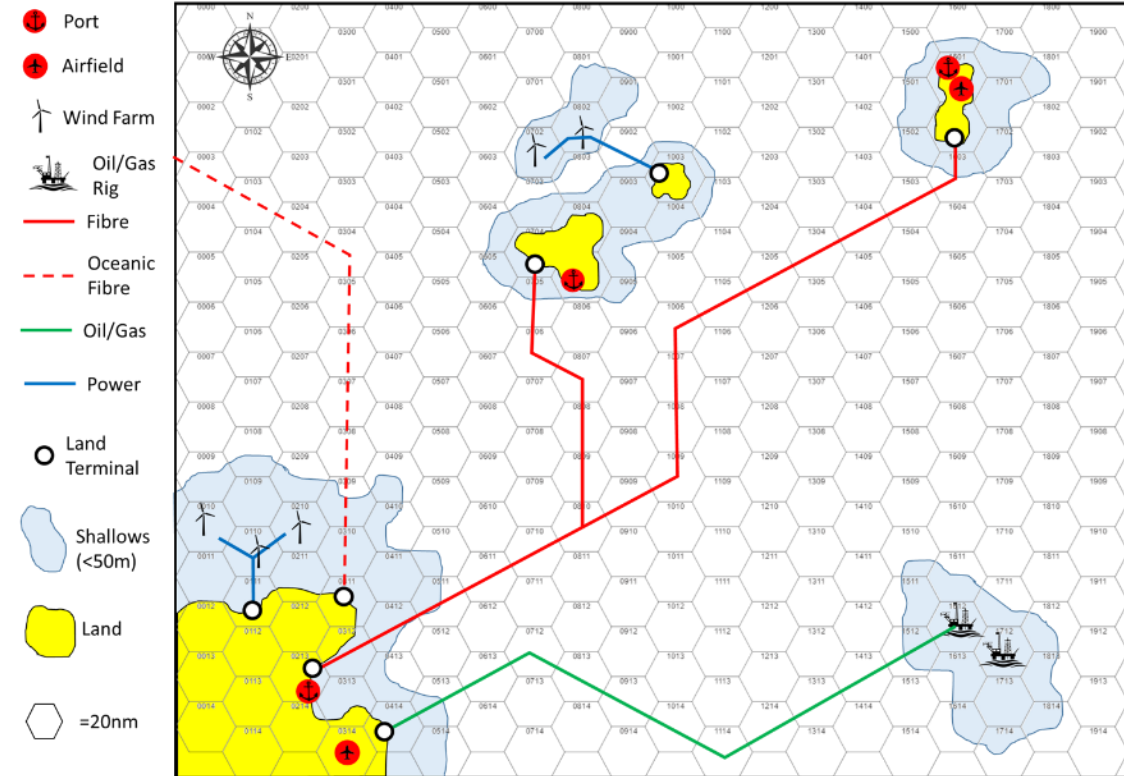
# Specialist Topics 2 – Seabed Operations

## “Cobalt Rocks”

- Design and operation of seabed warfare vessels
- Development of national infrastructure protection systems
- Assessment of concepts for critical seabed infrastructure surveillance, protection and incident investigation
- By-products for “red” considerations

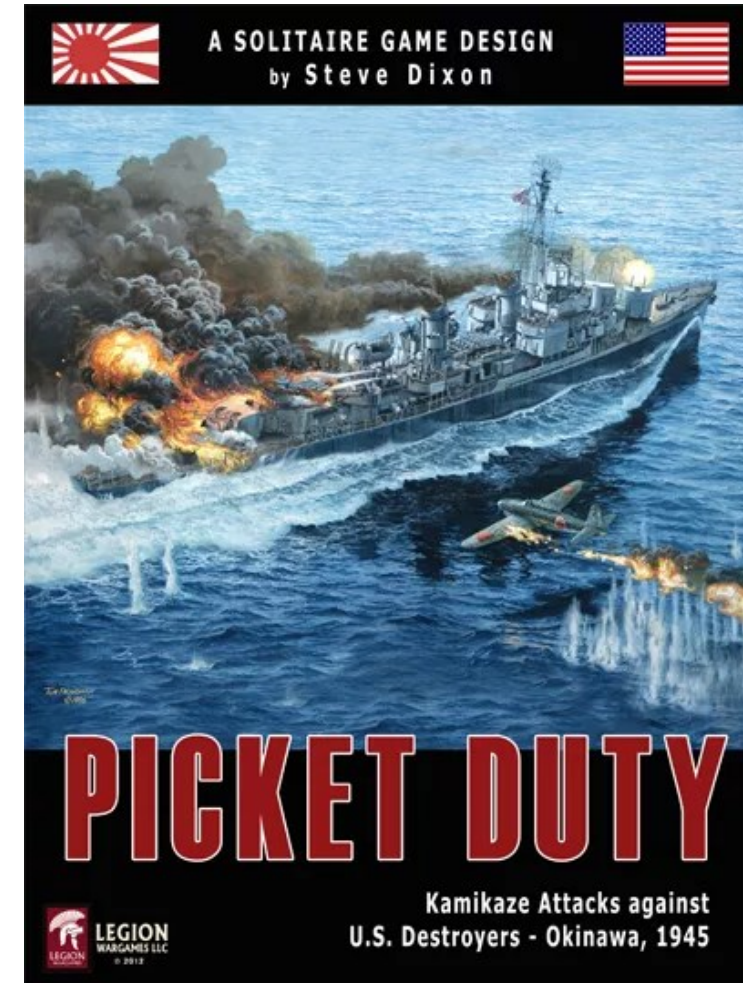
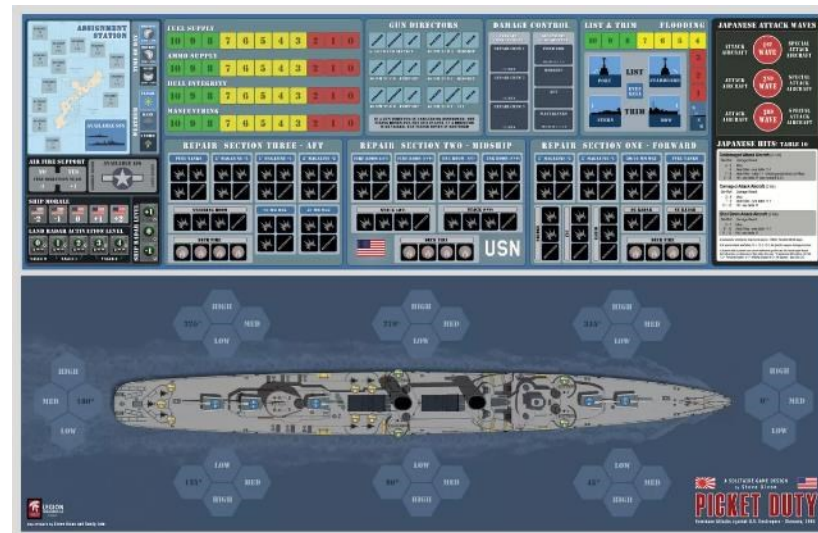
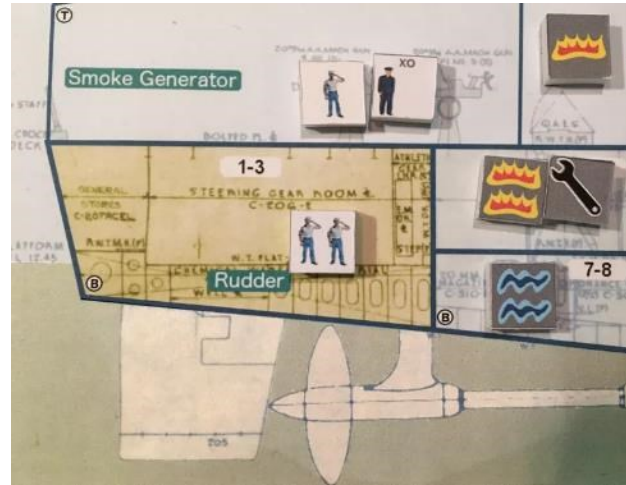


OPERATION COBALT ROCKS – CAMPAIGN MAP



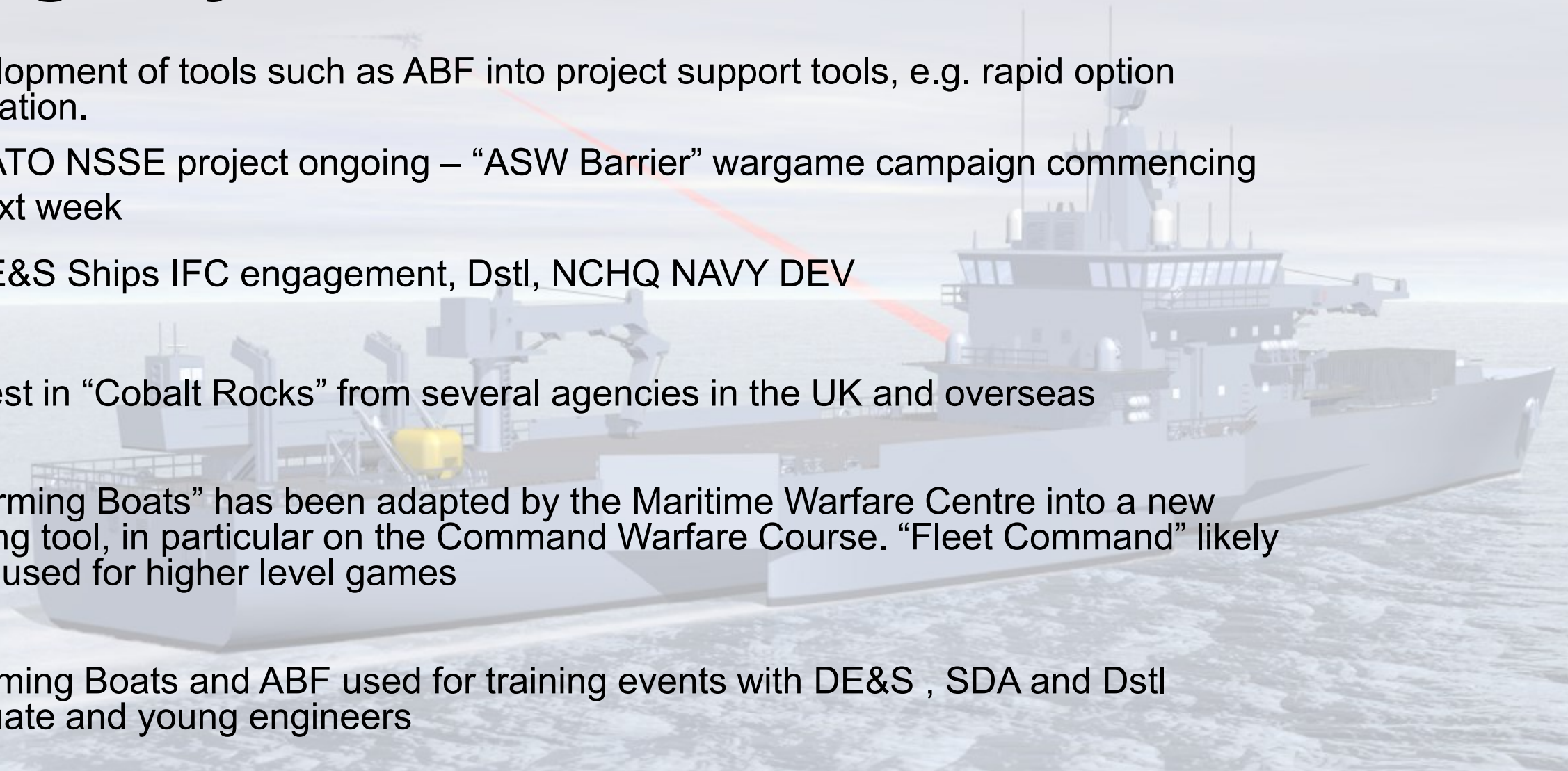
# Specialist Topics 3 – The “Internal Battle”

- A possible extension into damage control and firefighting
- Tabletop assessment of alternative methodologies and equipment
- Aiming to conduct a joint project with MOD and Industry DCFF specialists



# Going Beyond UCL

- Development of tools such as ABF into project support tools, e.g. rapid option evaluation.
  - NATO NSSE project ongoing – “ASW Barrier” wargame campaign commencing next week
  - DE&S Ships IFC engagement, Dstl, NCHQ NAVY DEV
- Interest in “Cobalt Rocks” from several agencies in the UK and overseas
- “Swarming Boats” has been adapted by the Maritime Warfare Centre into a new training tool, in particular on the Command Warfare Course. “Fleet Command” likely to be used for higher level games
- Swarming Boats and ABF used for training events with DE&S , SDA and Dstl graduate and young engineers



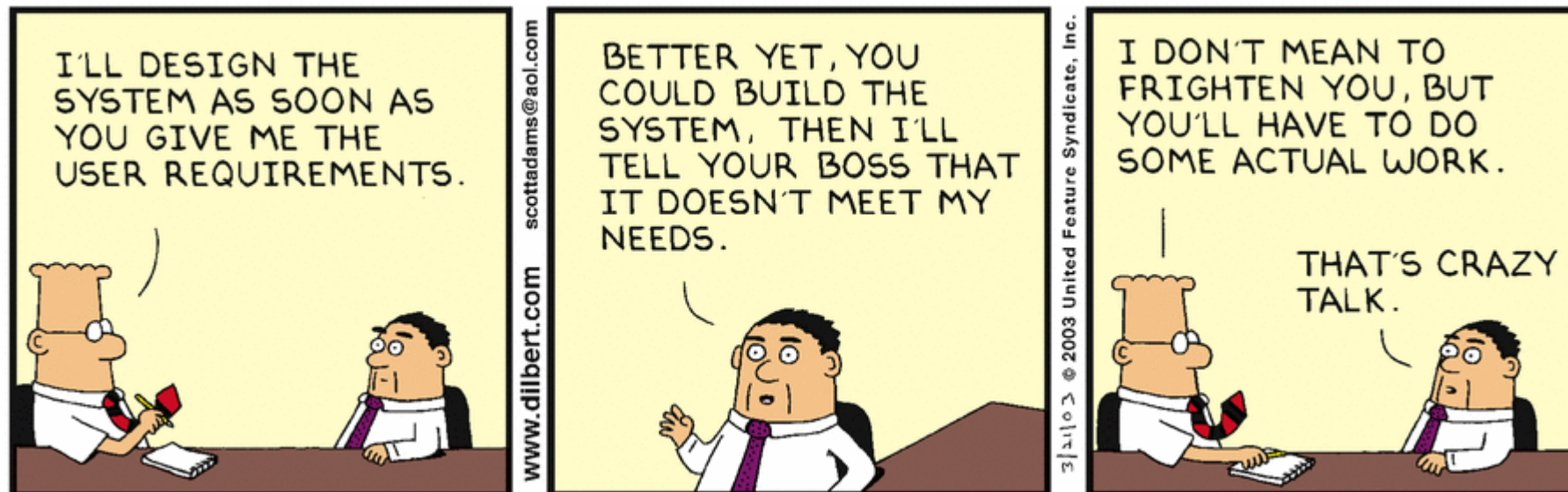
# NATO Specialist Team on Naval Ship Systems Engineering

NATO working group

- Its mission is to support NATO nations in developing cost-effective warships
- By developing methods of assessment and processes for the concept stage of naval ship design
- Sub group of NATO Ship Design Capability Group (SDCG)
- Tasked by SDCG to develop a NATO standard

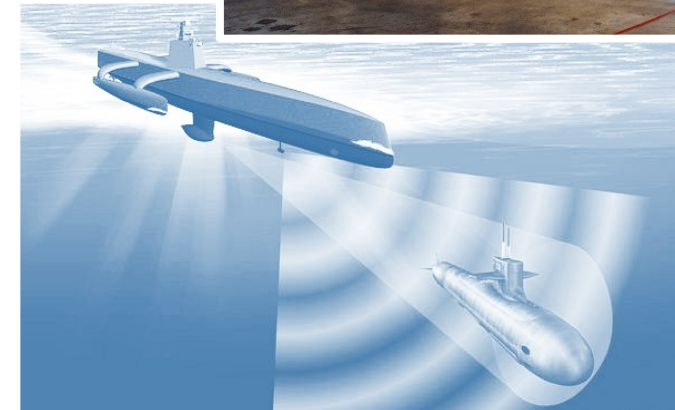
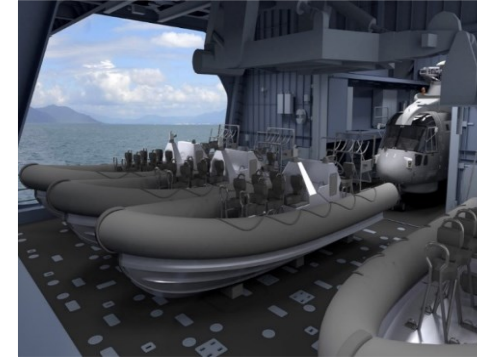
Important in Naval Ship Systems Engineering

- Capturing stakeholder needs and expectations
  - Controlling the naval ship requirements and budget modification process
- Outcome is of critical importance to combat effectiveness
- Can wargaming help finding out what it is that drives the design of a warship?



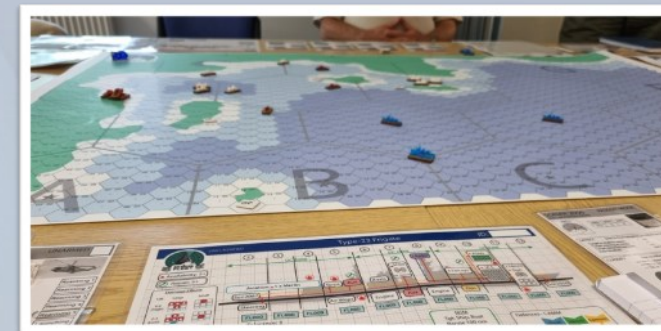
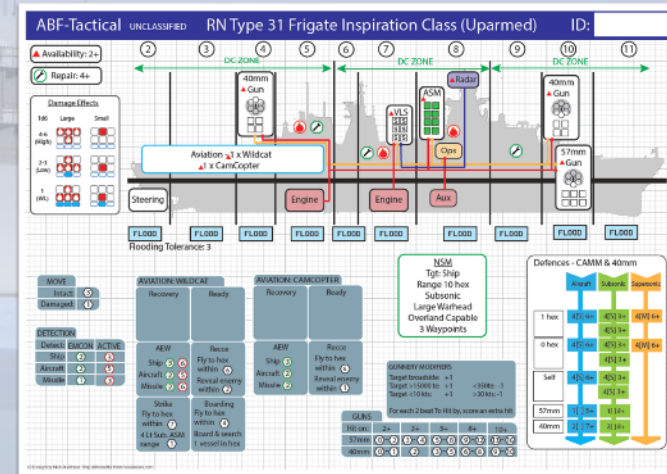
# NATO Specialist Team on Naval Ship Systems Engineering

- Recent work concentrated on Mission Modularity, working closely with other STs to develop interface standards and proving the case for mission modularity in naval ships.
- *STANAG 4830 / ANEP-91 / ANEP-99*
- Work included a 2 day wargame applying Mission Modularity to a series of low end naval missions (disaster relief, counter piracy and non-combatant evacuation operations).
- This wargaming activity showed promise in its ability to explore concepts and hence ST/NSSE's current programme of work is going further, considering more high-end warfighting roles
- Aiming to creating formal guidance within SDCG's suite of standards and guidance on the conduct of wargaming for concept analysis and assessment.



# ST/NSSE Project Wargames

- Demonstration of wargaming applied as a concept assessment tool
- Using a realistic “high end warfighting” relevant to current NATO members and allies
- ASW barrier using offboard systems selected as the concept for study
- Wargaming to find out if it is possible to protect an amphibious task group against enemy submarines using only offboard maritime unmanned systems instead of traditional anti-submarine warfare frigates
- Concepts explored through a 3 day wargaming “campaign” centred on a Non-combatant Evacuation Operation (NEO) in the face of a hostile threat
- Games run at the NDP offices in Filton, involving NSSE members, SMEs, “interested parties” and others



# Schedule of Games

## Day 1:

- Briefing
- Game 0: Training Vignettes
- Game 1: Baseline ASW Task Force, Insertion

## Day 2:

- Game 2a, 2b: Baseline ASW Task Force, Barrier
- Game 3a, 3b: UXV Force Mix 1, Barrier

## Day 3:

- Game 4a, 4b: UXV Force Mix 2, Barrier
- Game 5a, 5b: UXV Force Mix 2, Extraction

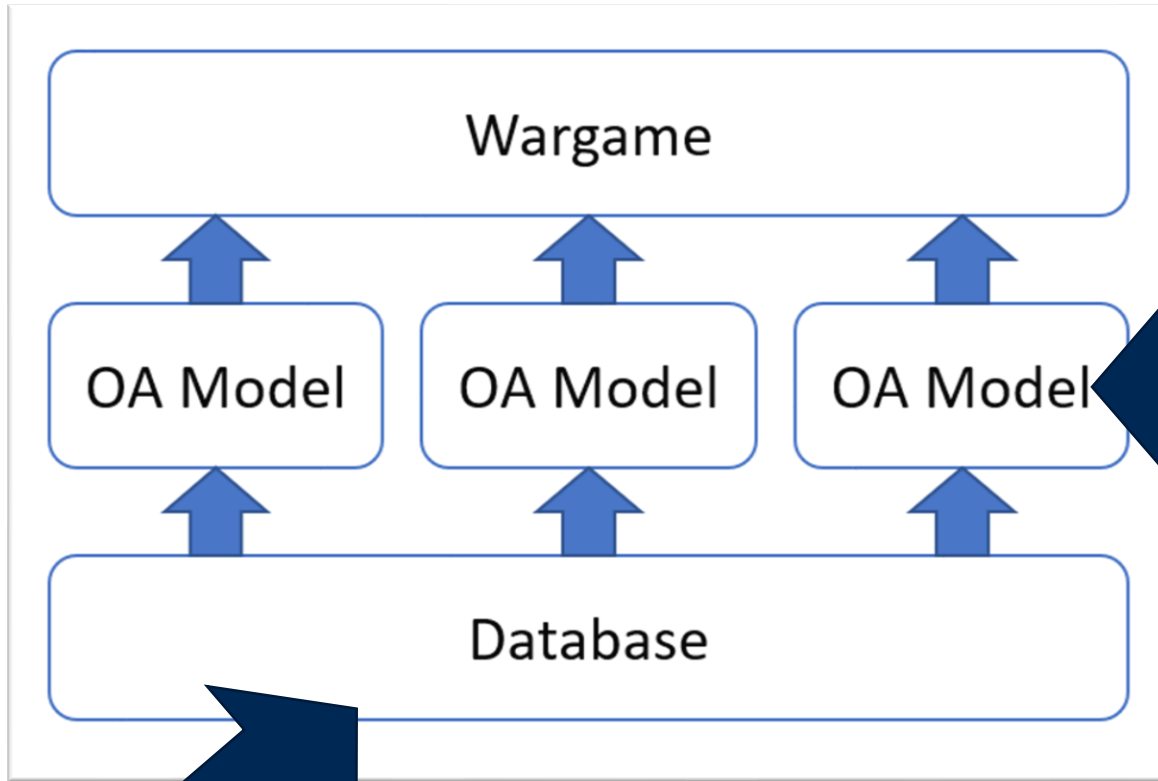
## Day 4:

- Washup, discussion
- “Hot wash” debriefs after each game

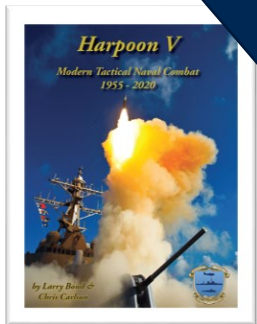




# Game Data Architecture



	A	B	C	D	E	F	G	H	I	J	K
1	Obsvr Size	Large	Large		Horizon to Target Alt		48.1 km				
2	Radar Type	1	LIG-346B		Radar Detect Target Sig		131.35 km				
3	Combat Sys	6A	6A		Target Detected At:		48.1 km				
4	Reaction Time	12 s									
5	KA Time	5 s									
6											
7				Bus Spd	Sep Rng	Trm Spd	Flight	Terminal	Bandit	Bandit	
8				m/s	m	m/s	Profile	Mnvr km	Signature	Sig Mod	
9	ASCM Type	2	GENERIC BUS-BOOST	300	20,372	807	Vlow	0	VSmall	-1	
10											
11				Min Rng	Max Rng	ATA	Tgts/Dir	Msl/Tgt	Min Alt	Spd	
12				m	m					m/s	
13	SAM Type	9	CAMM	900	25,000	2.5	4	2	VLow	1,030	
14											
15	Detection Range		48,100 m								
16	Raid spd @ Detection		300 m/s								
17	Reaction time		12 s								
18	Engagement Range		44,500								
19	Max SAM Kinematic Range		32,282 m								
20	Raid range at first SAM launc		32,282 m								
21											
22	Timestep	2	seconds		Hex Size	10	nm				
23											
24	Range (hexes)				2	1	1				
25	Targets				4	4	4				
26	pHit				0.80	0.60	0.60				
27	d10 Roll				3+	5+	5+				
28											
29	SAM Launch times		(seconds)		0	31	51	63	69	155	1
30	SAM Salvo ID				1	2	3	4	5	6	
31	Max Range SAM reaches		m		26780	16480	8240	2060	0	0	
32	Impact Time		s		26	46	58	64	150	150	1
33	Raid Range at Launch		m		32,280	23,280	12,180	2,460	-	-	-
34	Raid Speed at Intercept		m/s		300	810	810	810	-	-	-
35	Raid Range at Intercept		m		24,480	15,420	5,700	840	-	-	-
36	VALID SHOT Y/N				1	1	1	-	-	-	-
37											
38	Target Size Mod				-1.0	-1.0	-1.0				
39	CS Gen Mod				1.5	1.5	1.5				
40	Seaskimmer Mod				0.0	0.0	0.0				



# Ship Sheets, Capability Cards

**Mission Bay Frigate** ID:  

UNCLASSIFIED

**Availability:** 2+

**Repair:** 5+

**Damage Effects**

1ds	Large	Small
4-6 (High)		
2-3 (Low)		
1 (WL)		

**MOVE**

Intact:	30 kts - Noisy
	20 kts - Noisy
	10 kts - Noisy
Damaged:	10 kts - Noisy

**ABOVEWATER DETECT**

	EMCON	ACTIVE
Ship	20 2	30 3
Aircraft	20 2	50 5
Missile	10 2	30 3

**NSM**

Tgt: Ship, Boat  
Range 100 nm  
Subsonic  
Large Warhead  
Overland Capable  
3 Waypoints  
Stealthy: -1 to be hit

**GUNNERY MODIFIERS**

Target not evasive: +2  
Target broadside: +1  
Large Target >15000 te: +1  
Small Target <350te: -1  
Slow Target <10 kts: +1  
Fast Target >30 kts: -1

**GUNS (Ranges in 1nm hexes)**

Hit on:	2+	3+	5+	8+	10+	Extra
76mm		0-2	3-4	5-6	7-8	2
SCG	0	1-2	3	4	5	2

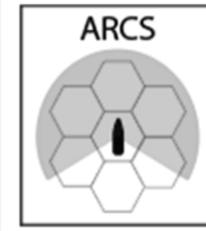
**Air Weapons**  
Stingray LWT [T]  
Sea Venom ASM [L]  
Stingrays may be ship launched from Torps box

**ASW**  
Sonar 2050 Bow Array  
Torpedo Decoys

**Subcraft**  
1 x NH-90 Helicopter Mission Bay

## SONAR 2050 PASSIVE MODE

HULL MOUNTED SONAR



90%	60%	30%
0-2	3	4



**DETECT** (Use TN from template, modified as below):

Target in shallow water:	+4
Target moving at 10 kts:	-3
Target detected last turn:	+2
Poor Weather:	See weather card

**CLASSIFY** (Use modified TN from Detect phase)

- <= TN+1: Identified accurately (individual unit)
- <= TN+2: Ship/Sub/Bio, Nationality, Propulsion
- <= TN+3: Ship/Sub/Bio
- > TN+3: No Information

**LOCALISE**

	On Detection	Detection +1	Detection +2	Detection +3
0-2 hex	Good			
3-4 hex	Fair	→ Good		
5-6 hex	Poor	→ Good		
7-10 hex	Poor	→ Fair	→ Good	
11+ hex	Poor	→ Poor	→ Fair	→ Good

11 7 Dorian by Wick Bradshaw. Site stillborn from wikipedia.com

# Agility – Rapid Tech Insertion

After Day 2, inserted:

- ASROC
- “Palisade” SSTD UXV
- Seabed Sensor Network


With SME data input, created capability cards overnight and introduced on Day 3

PALISADE

TORP. DEFENCE

UNCREWED BOAT

Refuel/Rearm 6 hours  
 Lnch/Recv 2 turn  
 Listen Speed 5 knots  
 Sprint Speed 30 knots  
 Endurance 24 hours at 5 kts



Rearming 1

Rearming 2

Rearming 3

Rearming 4

Launching

Launching

SENSORS

Torpedo Intercept Sonar

WEAPONS

4 x SeaSpider ATT

# Key Outcomes (Summary)

- Effectiveness of USV towed arrays, especially where they bring the ability to add mass of sensors
- The absolute dependence of all uncrewed systems on a fully integrated, stable and robust mesh network solution for MUS C2 – A CRITICAL aspect for UUVs
- The very high positive impact of ASROC as a Blue asset
- Unexpected heavy use of Ship Launched Torpedo systems.
- Efficacy of a USV based Torpedo Decoy
- Heavy expenditure of sonobuoys
- Weather and environmental impacts
- Continued utility of crewed ASW helicopters in a UXV environment

*“Whilst all the above points are heavily caveated by the artificialities of game mechanics and nature of using unclassified data, vice real world, there is no doubt that these issues would warrant further exploration in a more developed gaming environment.”* - NATO ASW Barrier Project Director



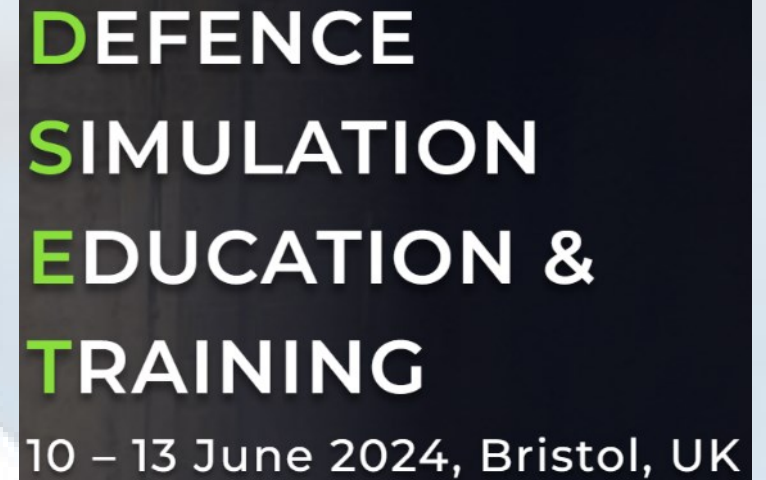
# Conclusions

- Did it work? – YES
- Benefits to exploring concepts – even with Open Source data
- Generated a great many insights of benefit to the NATO ASW Barrier Team
- Provided a bird's-eye view before diving into detail
- Determine what questions to ask
- Agility of manual wargaming (with SME input)
- Identify disruptive technologies
- Identify technologies which do – or don't - work well
- Identify gaps that could usefully be filled
- Instant arms race – counter, counter-counter
- 2<sup>nd</sup>/3<sup>rd</sup> order effects, “system” aspects, synergies



# Conclusion

- Wargaming shown to have significant potential benefit in naval concept analysis
- To be carried forward in a NATO context (ASW Barrier), also generated work in DE&S (MRSS)
- UCL has developed a range of wargames that ably support its educational and design support requirements, supplementing its own games with commercial products where it is effective to do so
- Those games have obvious utility beyond the academic environment
- The benefits of learning and development activities using these games is already being felt in the UK naval environment
- There is always more to do.....



**DEFENCE  
SIMULATION  
EDUCATION &  
TRAINING**

10 – 13 June 2024, Bristol, UK



MECHANICAL ENGINEERING

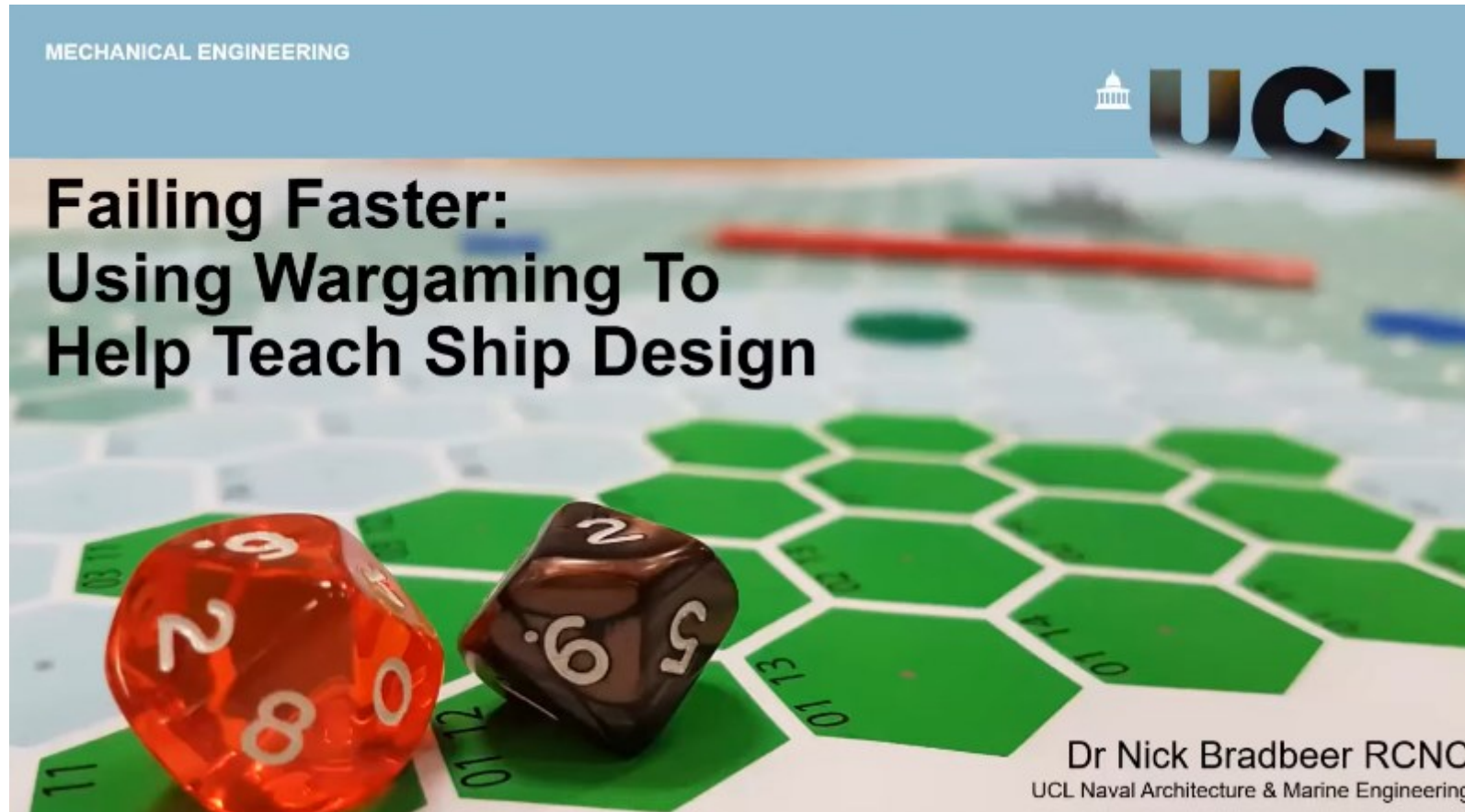
**UCL**

**Failing Faster:  
Using Wargaming To  
Help Teach Ship Design**

Dr Nick Bradbeer RCNC  
UCL Naval Architecture & Marine Engineering

<https://www.youtube.com/watch?v=cP6HzLB0DZI>

# For more info:



<https://www.youtube.com/watch?v=cP6HzLB0DZI>